

Plateau Villa P2 - 4 bedrooms



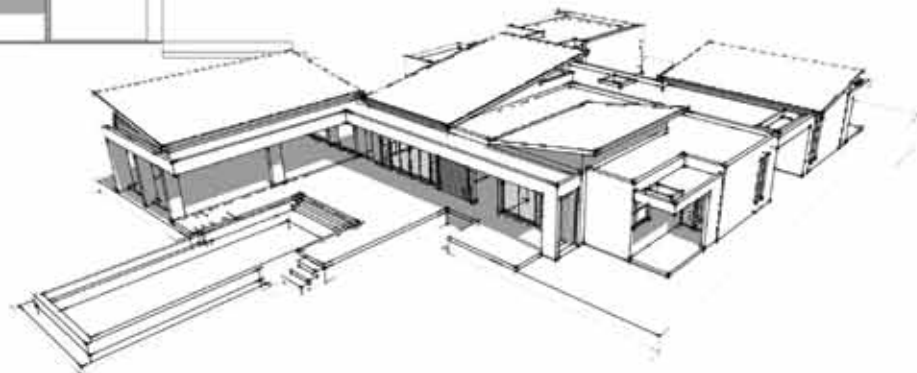
front elevation



typical side elevation



entry elevation



Disclaimer

The illustrations contained in this Brochure are purely artists' impressions and must not be relied upon. Medine Ltd reserves the right to change, alter and/or modify at any time and without notice, any of the contents of this Brochure, including but not limited to any pricing, pictures, illustration, layouts, plans, dimensions and/or surface areas.

The contents of this Brochure are NOT intended to be of a contractual nature. Thus, nothing in this Brochure shall be construed as being an offer to sell or a solicitation of any offers to buy. Medine Ltd, including any of its affiliates, employees, officers and/or agents shall NOT be responsible for any damage, loss and/or prejudice whatsoever, arising from any reliance placed by any person(s) on any of the contents of this brochure.

Plateau Villa P2

Area Schedule (m²)

Net Internal Area (NIA)	226.6
Covered External Area	49.1
NIA Utility Zones	44.1
Gross Covered Area	360

(gross area not inclusive of uncovered decks, but includes wall thickness)



Disclaimer

The illustrations contained in this Brochure are purely artists' impressions and must not be relied upon. Medine Ltd reserves the right to change, alter and/or modify at any time and without notice, any of the contents of this Brochure, including but not limited to any pricing, pictures, illustration, layouts, plans, dimensions and/or surface areas.

The contents of this Brochure are NOT intended to be of a contractual nature. Thus, nothing in this Brochure shall be construed as being an offer to sell or a solicitation of any offers to buy. Medine Ltd, including any of its affiliates, employees, officers and/or agents shall NOT be responsible for any damage, loss and/or prejudice whatsoever, arising from any reliance placed by any person(s) on any of the contents of this brochure.